



ZX-01

ZX-02

2020 Telemetry Product Catalogue

intelligence

int

Mining Telemetry - All the data, All the time

- Collects live data from a range of machines (CM, BM, SC, Bolters, Conveyors)
- Presents the data live across a range of devices in a range of formats
- Protects from network dropouts, no loss of data!
- A VAST RANGE of standard end user driven report generators
- Visually clear and intuitive, with simple navigation and control mechanics
- Web browser interface to support PC, Laptop, Tablet and Smartphone
- Permission levels to present appropriate range of data with query tools
- Future proofed to support future changes in hardware and operating systems
- IS optimised for existing Pempek Ecosystem & Nautitech modems

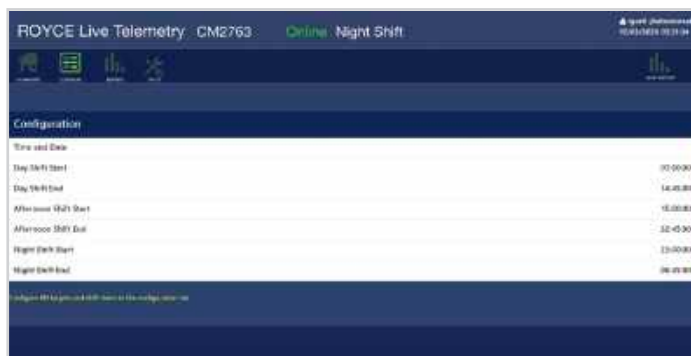
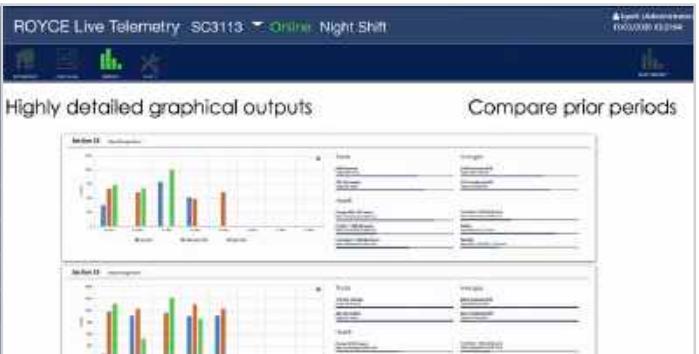


Live, reliable, future proofed,
user driven reporting,
available anywhere.



A VAST range of preconfigured reports

- Activity - Shows machine activity
- Production - Shows estimated coal output and info
- Event - Highlights notable machine events
- Fault - Details on last 20 active faults
- Cycle Time - Graphical break-down of cutting cycle
- User Configured - User selects elements to be graphed
- Custom - Custom reports request to be added to app



Live data displayed on any device!



Oracle Data Wi-Fi Access Point

Oracle Data Flameproof Wi-Fi Oracle Access Point requiring IECEx Cable Gland 6.6mm to 9.5mm
Part Number: **L0MT0401**

Oracle Data Flameproof Wi-Fi Access Point requiring IECEx Cable Gland 9mm to 11.9mm
Part Number: **L0MT0404**

Oracle Data Flameproof Wi-Fi Oracle Access Point requiring MSHA Cable Gland
Part Number: **L0MT0501**

The L0MT0401 model Wi-Fi Oracle Data is an industrial, flameproof (Ex d) Wi-Fi Data Transceiver Module designed for reliable, high-speed data access in underground mining applications

The L0MT0401 model is suitable for applications requiring IEC Ex flameproof certification

This L0MT0401 model supports data and power cable with O.D. range of 6.6 to 9.5mm (Pempek Gland P/N: CWR00161)

This L0MT0404 model supports data and power cable with O.D. range of 9 to 11.9 mm (Pempek Gland P/N: CWR02137)

The L0MT0501 model is intended for MSHA-approved (USA) applications only

This L0MT0501 model supports data and power cable with O.D. range of 6.6 to 9.5mm (Pempek Gland P/N: H0MT2801)

Features & Benefits

- Deployment-ready Wi-Fi solution for underground mining
- Self-contained, certified, flameproof (Ex d) housing
- No external antenna cable required
- Antenna is built into the housing of the product
- Flexible power supply options (PoE or 24VDC)
- Single gland entry for power and data cable
- Simple way to add Wi-Fi connectivity
- Cost effective (one product solution)
- Easy maintenance
- Easy configuration

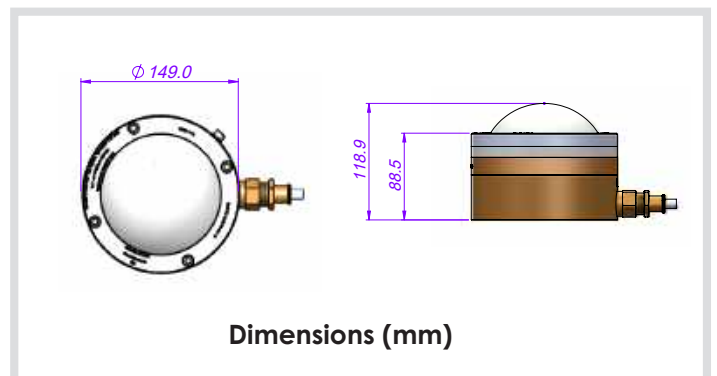


Specifications

- Wi-Fi Compliance: IEEE 802.11 b/g (2.4GHz)
- Power Supply: 24VDC or PoE (IEEE 802.3af) (5W Max)
- Ambient Temperature: -10°C to +60°C
- Ingress Protection: IP 65
- L0MT0401 Default Cable Gland: 6.6 to 9.5mm O.D.
- L0MT0404 Default Cable Gland: 9 to 11.9 mm O.D.
- L0MT0501 Default Cable Gland: 6.6 to 9.5mm O.D.

Typical Application

- Underground mining vehicles
- Longwall face equipment
- Telemetry relay networks
- Mesh networks



Pempek's Intelligent Collector Protects Against Data Loss.

Data disconnection? No data lost with the Pempek Orchid unit.

Collector Orchid

Part Number: L11KØ1Ø1

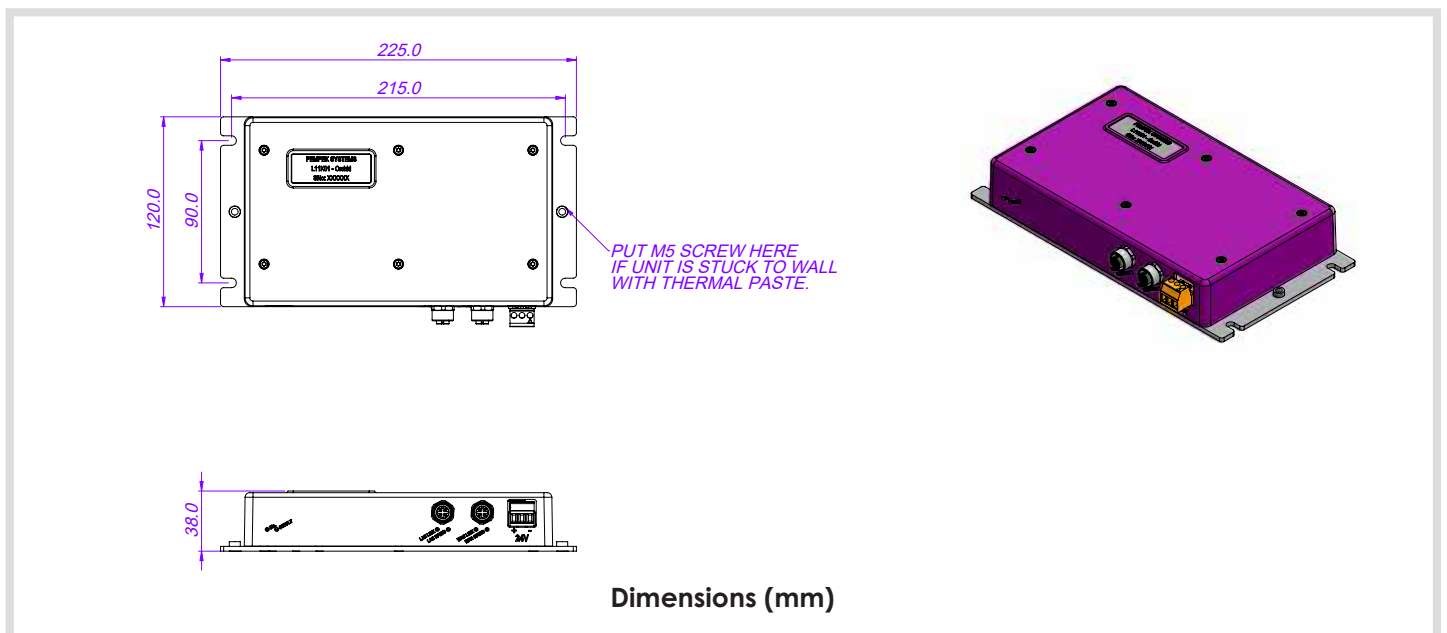
Features & Benefits

- Provides a point of collection from a number of sources.
- Has on board, data buffer.
- Data connection can be down for up to five days without data loss.
- Once reconnected, collector will feed stored and live data simultaneously.
- EIP functionality setup.
- Diagnostic tool useful to validate system setup and health checks.
- Two isolated network adapters.
- Can act as a gateway between mine and machine network.



Typical Application

- Continuous Miners
- Continuous Haulage
- Long Wall Shearers
- Mobile Bolters
- Mobile Roof Supports
- Remote Control Scoops
- Remote Control Loaders
- Shuttle Cars
- Feeder Breakers





www.pempek.com.au | sales@pempek.com.au | +61 02 8853 4800

Pempek Systems Pty Ltd reserves the right to make corrections, enhancements, improvements and other changes to its products and services as needed. All products are sold subject to Pempek's terms and conditions of sale supplied at the time of order acknowledgment. Pempek warrants the performance of its products to the specifications applicable at the time of sale, in accordance with the warranty specified by the terms and conditions of sale.