

L07H1401 LED Matrix Flameproof Display Module Ex id

LED Matrix Flameproof Display Module is an industrial flameproof display module designed for remote viewing purposes.

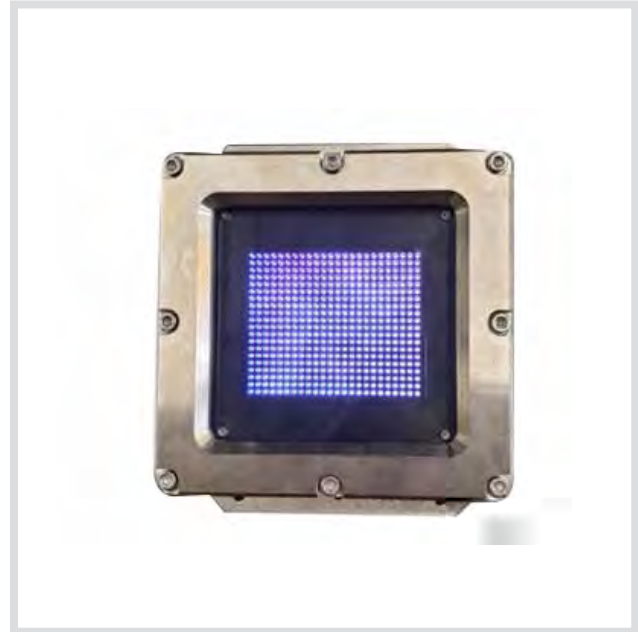
Utilising large seven segment LED displays, the module provides clear viewing from distance where remote operation is required.

Most typically, information will be in numerical format which relates to its most common application for methane percentage readouts. However, numerous words and/or codes can be displayed on demand.

Designed to exacting requirements of IEC 60079.1 and MSHA CFR 30, this Ex id flameproof enclosure is designed for world-wide explosive atmosphere regulatory approval allowing it to be installed into any underground environment after certification assessment.

Supporting a myriad of industrial applications such as housing for display, camera, inclinometer and junction assemblies this universal flameproof enclosure can be installed in various custom deployments with ease.

A highly flexible approval allows to vary the enclosure depth, number of gland entries and different lid options making it ideal enclosure where fit to purpose solution is required.



Features

Flame Proof Enclosure

- Precision Machined Mild Steel
- Ex id Approved IEC/ATEX/MSHA

Embedded Industrial Display Module

- Large two row seven segment display
- Highly viewable at distance

CAN 2.0B Network

- Supports CAN 2.0B
- Supports RS-422 as an option

Operates -10 C to +65 C

- All industrial components

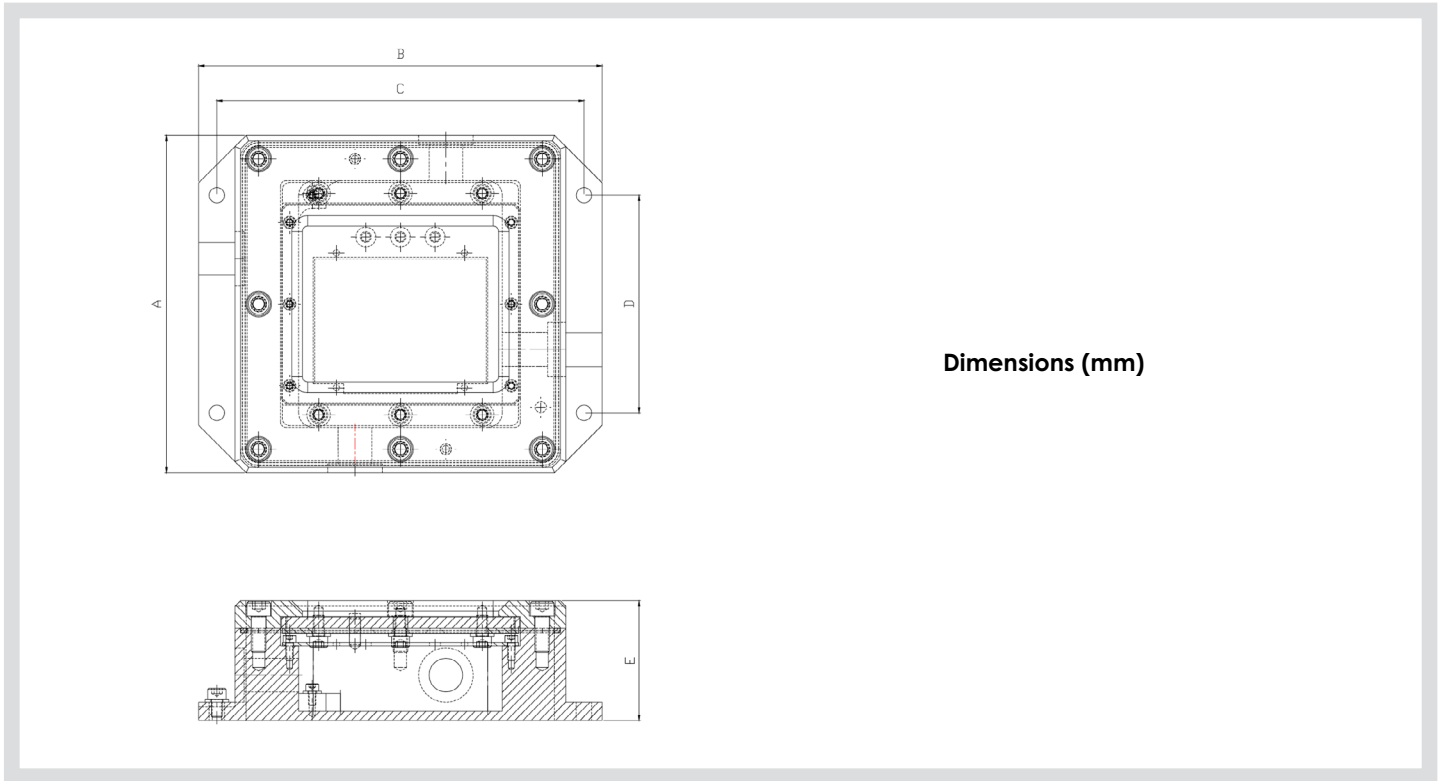
Heavy Duty Enclosure

- Electroless Nickel Plated
- Ingress protection to IP67 ('O' ringed)
- Rugged Construction

Typical Application

- Typical Applications
- Continuous Miners / Bolters
- Continuous Haulage
- Long Wall Shearers
- Mobile Bolters
- Mobile Roof Supports
- Remote Control Scoops
- Remote Control Loaders
- Shuttle Cars
- Any Ex id display application

L07H1401 LED Matrix Flameproof Display Module Ex id



Dimensions (mm)

Interface Description

The Type L07H Display Module can only be interfaced via approved explosion proof glands. Internal termination is via terminal strip.

Dimension	Measurement	Description
A	186	Height
B	222	Width
C	202	Mounting Centre Width
D	120	Mounting Centre Height
E	66	Depth

Material

- Enclosure is Electroless nickel plated mild steel.
- Lense is Toughened Glass.

Fasteners

- M8 x 20mm x 12

Gland Entries

- 4 x M20

Mass

- 12.5kg (27.5lb)

L07H1401 LED Matrix Flameproof Display Module Ex id

Wiring Assignments

PIN	Internal Terminal Block 10-Way Description	Signal
1	VDC	Supply Input
2	24VDC	Supply Input
3	Termination Link (If End-of-Line)	Link
4	Termination Link (If End-of-Line)	Link
5	CAN Low	Communications
6	CAN High	Communications
7	RS-422 TXD Positive	Communications
8	RS-422 TXD Negative	Communications
9	RS-422 RXD Positive	Communications
10	RS-422 RXD Negative	Communications

Electrical Characteristics

Supply

Voltage	24VDC
Power Consumption typical	2.5W typical
Maximum Dissipation	30W

Communications

Interface	CAN
Throughput	500KBits
Protocol	CAN 2.0B (Message Oriented)
Medium	Copper
Interface	RS-422
Throughput	57.6KBits
Protocol	Packet Oriented
Medium	Copper

Environmental

Ingress Protection	IP65
Operating Temperature	Minus 10 C to +85 C
Humidity	Tested to 85%
MTBF	12,000 hours