

## LORA0111 ObelixPlus 10.4" Colour Display Module IEC Ex d Flameproof CODESYS 24VDC

Pempek's revolutionary NEW ObelixPLUS Machine Control Solution now offers users the ability to configure and modify their own control system, edit operational parameters and operator messages and error messages without having to open the flameproof enclosure.

Pempek's revolutionary NEW ObelixPLUS Machine Control Solution includes superior diagnostics.

Visible on the machine, a remote IS a tablet, at the surface, or your smartphone.

### Flame Proof Enclosure

- Precision Machined Mild Steel
- IEC Ex d I Approved

### Flame Proof Connector Assembly

- Unique flameproof connector
- IEC Ex d I Approved

### Industrial Display Module

- 10.4" True Colour LCD
- Rugged XScale CPU Core with GPU
- Highly Configurable WinCE Platform
- Highly viewable at distance

### Industrial Communication Interfaces

- Supports Ethernet 10/100 via TCP/IP
- Supports RS-422 via Proprietary Protocol
- Supports CAN 2.0B as Option

### Heavy Duty Enclosure

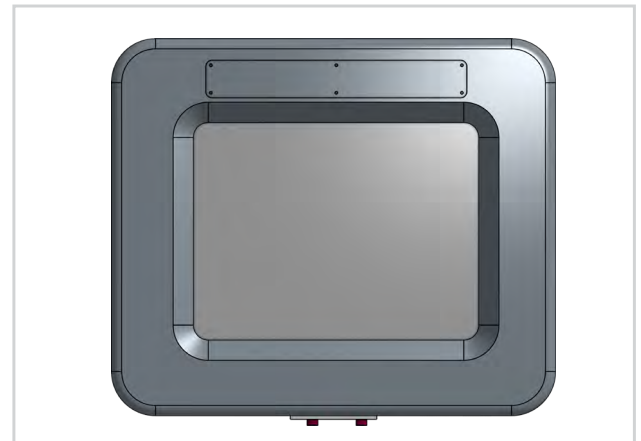
- Electroless Nickel Plated
- Ingress protection to IP65 ('O' ringed)
- Ultra Rugged Construction

### Material

- Enclosure is Electroless nickel plated mild steel.
- Lens is Lexan MR10.

### Fasteners

- M10 x 30mm x 16 Mass
- 60kg (132lb)



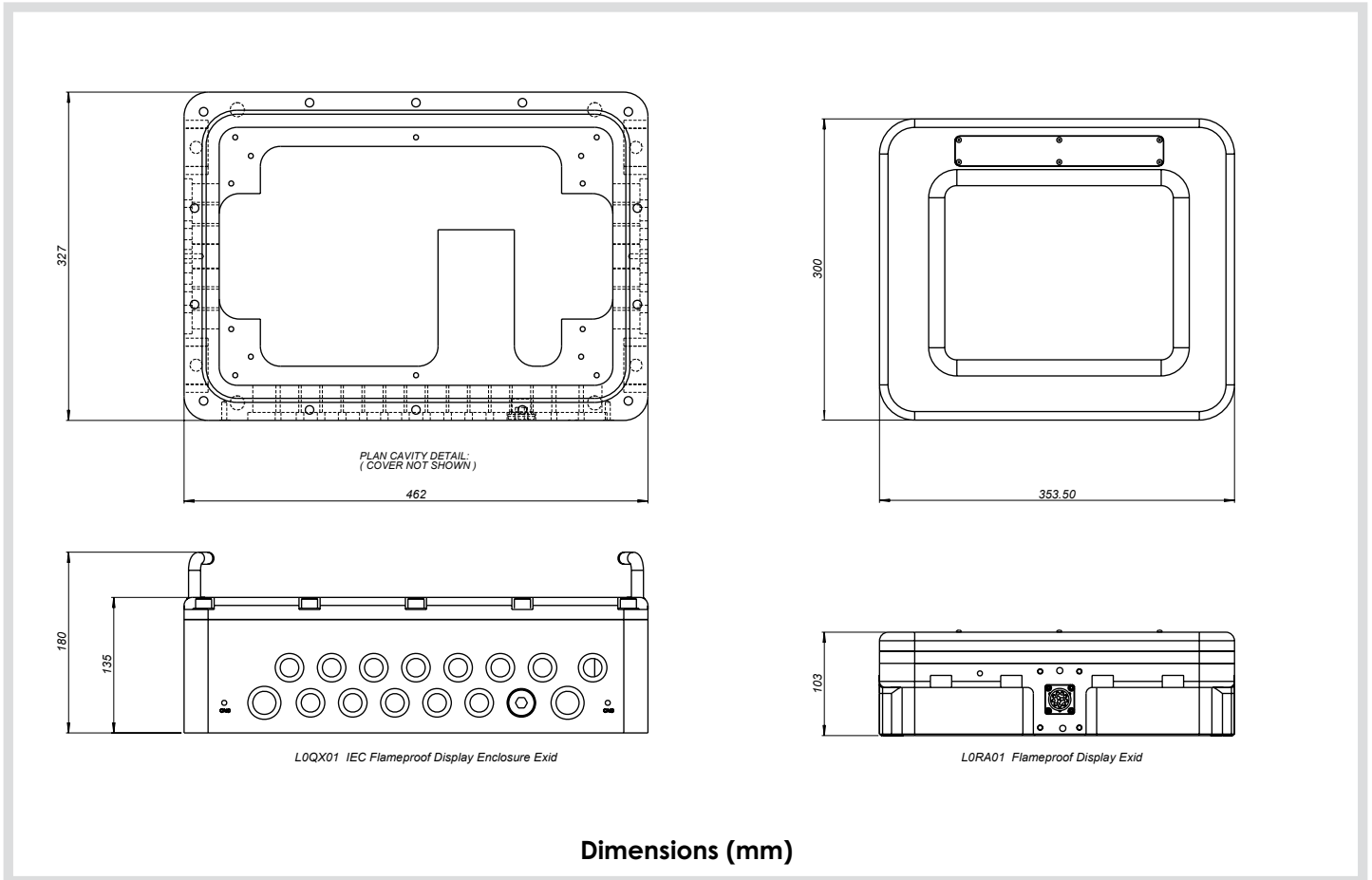
### Typical Application

- Continuous Miners / Bolters
- Continuous Haulage
- Long Wall Shearers
- Mobile Bolters
- Mobile Roof Supports
- Remote Control Scoops
- Remote Control Loaders
- Shuttle Cars
- Any Ex d I display application

### Connector Assembly

Part Number	Description
HORA0101	IEC Flameproof Connector Assembly

## LORA0111 ObelixPlus 10.4" Colour Display Module IEC Ex d Flameproof CODESYS 24VDC



### Wiring Assignments

PIN	Flameproof Connector Assembly Burndy 12 Way Female Description	Signal
A	Supply Input Active	110-240VAC Line
B	-	-
C	Supply Input Neutral	110-240VAC Neutral
D	RS-422 RXD -	Communications
E	RS-422 RXD +	Communications
F	RS-422 RXD -	Communications
G	RS-422 RXD +	Communications
H	Ethernet RX +	Communications
J	Ethernet RX -	Communications
K	Ethernet TX +	Communications
L	Ethernet TX -	Communications
M	-	-

## LORA0111 ObelixPlus 10.4" Colour Display Module IEC Ex d Flameproof CODESYS 24VDC

### Electrical Characteristics

#### Supply

<b>Voltage</b>	110VAC – 240VAC
<b>Power Consumption</b>	15W <sup>typical</sup>
<b>Maximum Dissipation</b>	17W

#### Communications

<b>Interface</b>	Ethernet 10/100
<b>Throughput</b>	Up to 100Mbps per second
<b>Protocol</b>	TCP/IP
<b>Medium</b>	Hybrid Twisted Pair
<b>Interface</b>	RS-422 Isolated
<b>Throughput</b>	57.6KBits
<b>Protocol</b>	Packet Oriented
<b>Medium</b>	Hybrid Twisted Pair

#### Visualisation

<b>LCD</b>	NEC 10.4" SVGA True Colour
<b>Computing</b>	Marvell 400MHz with companion Silicon Graphics GPU
<b>Operating System</b>	Windows CE 5.0

#### Environmental

<b>Ingress Protection</b>	IP65
<b>Operating Temperature</b>	Minus 10°C to +75°C <sup>1</sup>
<b>Humidity</b>	TBA
<b>MTBF</b>	12,000 hours

#### Certification

<b>Australia</b>	IEC Ex TSA 06.0045X
<b>Europe</b>	-
<b>USA</b>	-